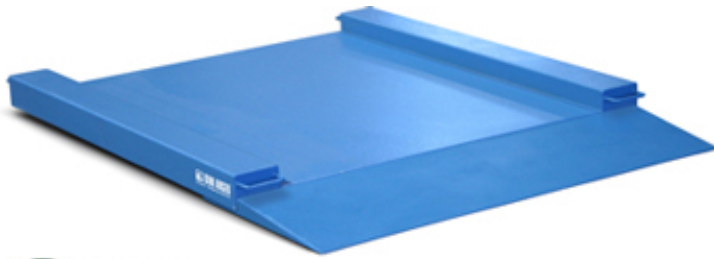
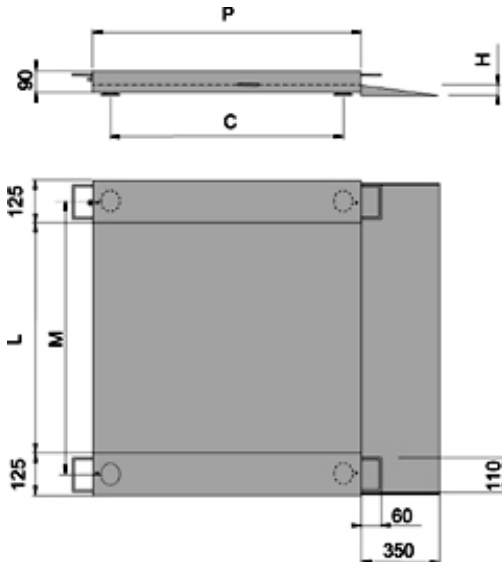


LP SERIES LOW PROFILE PLATFORMS



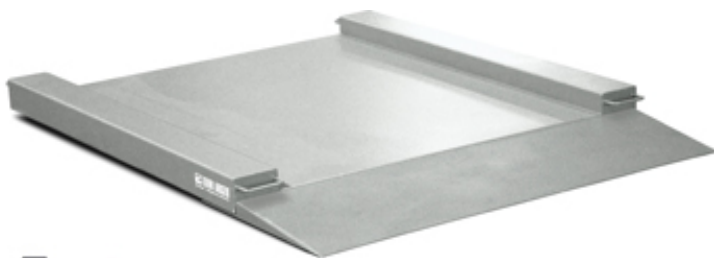
Low profile platforms suitable for weighing trolleys, pallet trucks, etc.; fitted with sideboards and an on/off ramp. Suitable for creating scales and electronic weighing systems for all types of industrial and commercial applications. Standard version is with approved load cell.

CEM 3000e + 3000e



Mod./Dim.	L	P	H	M	C
LPE	1000	1250	45	1130	1070
LPF	1250	1500	45	1380	1380

Dimensions in mm of the loading surface



Ex CEM 3000e + 3000e

LPI: stainless steel version

MAIN FEATURES

- Fitted with 4 shear-beam OIML approved load cells each with 350 Ohm input resistance with protection against dust
- Moulded sheet-steel structure and loading surface, oven-fire painted RAL 5007 blue.
- Adjustable, shock-proof jointed feet and level.
- 5/15 Vdc power supply.
- Hermetic junction box, IP67 wiring with screened 5m long 6-pin cable with connectors for connection to the indicator.
- Fitted with one on/off ramp.
- THE STAINLESS STEEL MODEL HAS THE STRUCTURE AND MECHANICS IN AISI304, AND IP68 STAINLESS STEEL LOAD CELLS

OPTIONS ONLY AVAILABLE AT TIME OF ORDER

- Connection to the indicator and calibration with CE-M 3000e single range or 3000e+3000e dual range approval (depending on the indicators used).
- High resolution model for internal factory use.

OPTIONS FOR ATEX VERSION

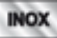

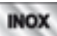

- CCATEX: ATEX certificate for each load cell.
- JB4QA: ATEX certified junction box.
- DCATEXMECH: Declaration of conformity of the whole system composed of PLATFORM + JUNCTION BOX + LOAD CELLS (only if the platform is ordered without the weight indicator; otherwise, refer to the certifications available for the indicator to which it will be connected).

WARNING



With ATEX weighing systems, when directly weighing light metals (such as aluminum, magnesium, titanium and their alloys), it is necessary to use the STAINLESS STEEL version.

Available versions

Code	l x w x h (mm)	Max (kg)	d (g)	CE-M* 3000e (g)	CE-M* 2x3000e (g)	d* HR (g)
LPE6	1000x1250x45	600	100	200	100-200	50
LPE15	1000x1250x45	1500	200	500	200-500	100
LPF6	1250x1500x45	600	100	200	100-200	50
LPF15	1250x1500x45	1500	200	500	200-500	100
LPEI6 	1000x1250x45	600	100	200	100-200	50
LPEI15 	1000x1250x45	1500	200	500	200-500	100
LPFI6 	1250x1500x45	600	100	200	100-200	50
LPFI15 	1250x1500x45	1500	200	500	200-500	100

(*) These divisions are obtainable only with the relative options

Options only available at time of order

Code	Description
ECEM1B	CE-M 3000e approval for class III or IIII scales, with capacity from 31 to 1500 kg.
ECEM2B	CE-M 2x3000e approval for class III or IIII scales, with capacity from 31 to 1500 kg.
ETHR	High resolution model for internal factory use.
CCATEX	ATEX certificate for each load cell for the following categories: ATEX II 1G Ex ia IIC T6 (Ta -20÷+40°C) TX (Ta -20÷+65°C) Ga and ATEX II 1D Ex ta IIIC TX°C (Ta -20÷+40°C) TX°C (Ta -20÷+65°C) Da IP65. Complete with manual and ATEX CE CONFORMITY DECLARATIONS (available in EN, DE, FR and IT).
JB4QA	Junction and equalisation box for hazardous areas ATEX, in ABS IP67, with 4 + 1 fairleads for connection with up to 4 load cells. Protection modes: ATEX II 2G Ex ib IIC T6 Gb for gases, ATEX II 2D Ex tb IIIC T115°C Db IP65 for dusts. Complete with manual and ATEX CE CONFORMITY DECLARATIONS (available in EN, DE, FR and IT).
DCATEXMECH	Declaration of ATEX conformity of whole, Ex II 2GD X system with relative whole system label, for mechanical structure with ATEX load cells (each cell must be certified with CCATEX option). ATEX CONFORMITY DECLARATIONS will be supplied in English.

Accessories

Code	Description
CSP38I	Stainless steel support column for the indicators of the DINI ARGEO and SCALE HOUSE range. Dimensions 520 x 527 mm, 1026 mm high, tubular Ø = 38 mm.
CSP38D	Stainless steel support column with painted steel base, for the indicators of the DINI ARGEO and SCALE HOUSE range. Dimensions 350x350 mm, height 750 mm.
LPER	Second on/off painted steel ramp 1250x350 mm.
LPERI	Second on/off stainless steel ramp 1250x350 m.
LPFR	Second on/off 1500x350 painted ramp
LPFRI	Second on/off ramp, 1500x350 mm size, in stainless steel.